

• 2021 •

# SUMMER ACTIVITY CAMP

Registration Opens May 4, 2021



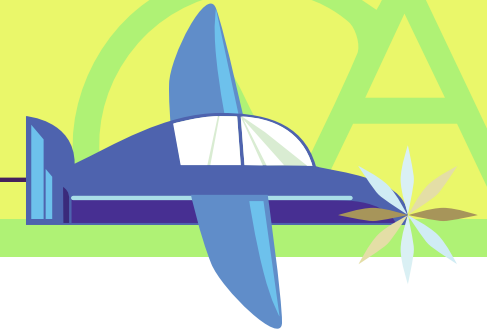
Seattle  
Parks & Recreation



\*Select camps are available for kids up to ages 13-14

# What You Need to Know:

SCHOLARSHIPS AVAILABLE •



## **SUMMER ACTIVITY CAMPS:**

For campers ages 5 -12 years (Five-year-old participants must be enrolled in Kindergarten in September).

**Please note:** Select camps extend through age 14.

## **LUNCH CLUB:**

Campers who attend both AM and PM sessions will have a supervised lunch hour, free of charge, which is registerable in the same ways as camp. All participants must be registered in Lunch Club to participate in it. Summer Sack Lunch availability TBD.

## **CLOTHING/WHAT TO BRING:**

Summer camps take place 100% outside and are very active and engaging. Campers should be dressed appropriately for the weather and for lots of physical activities. Participants should bring their own water bottle.

## **PAYMENT & REGISTRATION FEES:**

At the time of registration, a non-refundable deposit of 10% of the total cost of each camp is due. Remaining balances are due TWO weeks prior to the first week your child(ren) is attending. A \$20 NSF fee will be charged for all returned checks. Late payments are discouraged and may result in your child losing his or her reserved spot and deposit.

Payments can be made online through your ACTIVE Net account or over the phone at any of the following community centers/Seattle Parks and Recreation facilities:

1. High Point
2. Rainier Beach
3. Magnolia
4. Montlake
5. Yesler

**PLEASE NOTE:** No programs on Monday, July 5th in observance of Independence Day.

## **SCHOLARSHIP REQUESTS:**

Scholarship requests must be made prior to registration; approval is required to register at the scholarship price.

For scholarship application and information, please visit <https://www.seattle.gov/parks/find/scholarships-and-financial-aid> to download an application and instructions or call your local community center to arrange to pick-up a paper application.

## **SCHOLARSHIP ATTENDANCE:**

- Children receiving scholarships for camp are required to attend a minimum of 60% of program days in order to keep the scholarship award. If for any reason your child(ren) cannot meet the required minimum 60% attendance, please notify the Camp Director immediately. If your child drops below the required attendance they will be put on probation. A second occurrence of low attendance can result in removal of your scholarship allocation.
- Non-compliance to the attendance requirements could result in the forfeiture of your scholarship award for Summer Activity Camps.

## **TRANSFER POLICY:**

Families may transfer their child from one activity camp to another, without charge, if space exists. Requests must be received fourteen (14) days prior to the start of the camp.

## **SUMMER CAMP REFUND POLICY:**

- No refunds will be made for requests received within fourteen (14) days prior to the beginning of the camp.
- A service charge of 10% of the fee will be retained by the facility.
- No refunds will be made on payments provided as deposits for camps.
- Please be aware that activity camps are offered in AM and PM sessions. Camps operate independently of one another and registration in two camps per week does not guarantee full day care.

**\*Please note:** The information provided in this brochure may differ from on-line and actual offerings.

## **ON-LINE AND PHONE REGISTRATION:**

**Online and phone-in registration starts May 4, 2021 at Noon.**

Online registration will close two weeks prior to the start date of each camp. If online registration is closed, but space is available, you may still be able to register by calling one of the above listed community centers and pay over the phone.

Check out Seattle Parks and Recreation's online registration software at: [http://bit.ly/spr\\_registration\\_account](http://bit.ly/spr_registration_account)

Sign-in or create an account if this is your first time registering for SPR programs. Once you are logged in you can choose your programs and pay online.

## **EPACT AND PAPERWORK:**

Completed Epact profile and any additional medical forms must be turned in a minimum of **two weeks prior** to camp attendance. Registered participants who have not turned in all necessary authorization and medical forms risk being withdrawn from camps and charged all applicable withdrawal fees.

## **SAFETY PLANS AND HEALTH SCREENING:**

Based on current recommendations, guidelines, and directives from Governor Inslee, Mayor Durkan, Department of Health (DOH), Public Health-Seattle/King County (PHSKC) and Centers for Disease Control (CDC) in response to the Coronavirus COVID-19 pandemic, **all participants must pass a health screening prior to being signed in to their activity camp.**

**Parent/guardian must be present for daily health screenings, which will take place on-site and consist of a temperature check and a series of questions regarding potential symptoms and exposure to COVID-19.**

These safety policies and procedures are subject to change prior to the start of camp as guidance from the above mentioned entities evolve to fit our current situation within the COVID-19 pandemic.

**Campers will be required to wear a mask at all times except during water/snack breaks. Campers will be required to maintain appropriate social distancing at all times.**

Campers may be required to follow all travel quarantine requirements issued by Public Health-Seattle/King County.





Seattle Parks & Recreation



## HIGH POINT COMMUNITY CENTER

	W1 6/21-6/25			W2 6/28-7/2			W3* 7/6-7/9			W4 7/12-7/16			W5 7/19-7/23			W6 7/26-7/30			W7 8/2-8/6			W8 8/9-8/13			W9 8/16-8/20			W10 8/23-8/27		
	PROGRAM	AGE	CODE	PROGRAM	AGE	CODE	PROGRAM	AGE	CODE	PROGRAM	AGE	CODE	PROGRAM	AGE	CODE	PROGRAM	AGE	CODE	PROGRAM	AGE	CODE	PROGRAM	AGE	CODE	PROGRAM	AGE	CODE	PROGRAM	AGE	CODE
<b>AM CAMPS</b> 9 a.m.-12 p.m.	B4K: Mine & Craft Theater Camp	5-7 8-12	41691 41406	Theater Camp Comic Book Camp	5-7 8-12	41424 41673	B4K: Amus. Park Survivor Camp	5-7 8-12	41713 41429	Survivor Camp Jump Rope Camp	5-7 7-14	41438 41718	Hip Hop Recycled Arts	5-7 8-12	41466 41462	Recycled Arts Hip Hop	5-7 8-12	41464 41468	All Sports Nature Crafting	5-7 8-12	41474 41470	Nature Crafting All Sports	5-7 8-12	41472 41476	Transport LEGOs Theater Camp	5-7 8-12	41740 41446	Theater Camp Mys. & Fright	5-7 8-12	41450 41678
12-1 p.m.	Lunch Hour	5-12	41478	Lunch Hour	5-12	41479	Lunch Hour	5-12	41480	Lunch Hour	5-12	41481	Lunch Hour	5-12	41482	Lunch Hour	5-12	41483	Lunch Hour	5-12	41484	Lunch Hour	5-12	41485	Lunch Hour	5-12	41486	Lunch Hour	5-12	41487
<b>PM CAMPS</b> 1-4 p.m.	Theater Camp B4K: Galaxy	5-7 8-12	41418 41694	STEM w/LEGO Theater Camp	5-7 8-12	41682 41421	Survivor Camp Parkour Camp	5-7 8-12	41434 41662	Outdoor Dance Survivor Camp	6-8 8-12	41679 41441	Recycled Arts Hip Hop	5-7 8-12	41463 41467	Hip Hop Recycled Arts	5-7 8-12	41469 41465	Nature Crafting All Sports	5-7 8-12	41471 41475	All Sports Nature Crafting	5-7 8-12	41477 41473	Theater Camp Bash Em' LEGO	5-7 8-12	41448 41686	B4K: Galaxy Theater Camp	5-7 8-12	41730 41452

## JEFFERSON COMMUNITY CENTER

	W1 6/21-6/25			W2 6/28-7/2			W3* 7/6-7/9			W4 7/12-7/16			W5 7/19-7/23			W6 7/26-7/30			W7 8/2-8/6			W8 8/9-8/13			W9 8/16-8/20			W10 8/23-8/27		
	PROGRAM	AGE	CODE	PROGRAM	AGE	CODE	PROGRAM	AGE	CODE	PROGRAM	AGE	CODE	PROGRAM	AGE	CODE	PROGRAM	AGE	CODE	PROGRAM	AGE	CODE	PROGRAM	AGE	CODE	PROGRAM	AGE	CODE	PROGRAM	AGE	CODE
<b>AM CAMPS</b> 9 a.m.-12:30 p.m.	B4K: Mine & Craft Survivor Week	5-7 8-12	41688 41614	Survivor Week Hamilton w/SST	5-7 8-12	41616 41891	Hip Hop Recycled Arts	5-7 8-12	41610 41612	Recycled Arts Hip Hop	5-7 8-12	41624 41622	All Sports Nature Crafting	5-7 8-12	41628 41626	Nature Crafting All Sports	5-7 8-12	41630 41632	B4K: Mine & Craft Theater Camp	5-7 8-12	41723 41634	Theater Camp Comic Book Camp	5-7 8-12	41636 41677	B4K: Jurassic Survivor Week	5-7 8-12	41728 41618	Survivor Week Parkour Camp	5-7 8-13	41620 41789
12:30-1:30 p.m.	Lunch Hour	5-12	41508	Lunch Hour	5-12	41534	Lunch Hour	5-12	41535	Lunch Hour	5-12	41536	Lunch Hour	5-12	41537	Lunch Hour	5-12	41538	Lunch Hour	5-12	41539	Lunch Hour	5-12	41540	Lunch Hour	5-12	41541	Lunch Hour	5-12	41542
<b>PM CAMPS</b> 1:30-5 p.m.	Survivor Week Parkour Camp	5-7 8-13	41615 41655	B4K: Amus. Park Survivor Week	5-7 8-12	41697 41617	Recycled Arts Hip Hop	5-7 8-12	41613 41611	Hip Hop Recycled Arts	5-7 8-12	41623 41625	Nature Crafting All Sports	5-7 8-12	41627 41629	All Sports Nature Crafting	5-7 8-12	41633 41631	Theater Camp B4K: Galaxy	5-7 8-12	41635 41724	Jedi LEGO Theater Camp	5-7 8-12	41737 41637	Survivor Week Jump Rope Camp	5-7 7-14	41619 41720	STEM w/LEGO Survivor Week	5-7 8-12	41742 41621

## LOYAL HEIGHTS COMMUNITY CENTER

	W1 6/21-6/25			W2 6/28-7/2			W3* 7/6-7/9			W4 7/12-7/16			W5 7/19-7/23			W6 7/26-7/30			W7 8/2-8/6			W8 8/9-8/13			W9 8/16-8/20			W10 8/23-8/27		
	PROGRAM	AGE	CODE	PROGRAM	AGE	CODE	PROGRAM	AGE	CODE	PROGRAM	AGE	CODE	PROGRAM	AGE	CODE	PROGRAM	AGE	CODE	PROGRAM	AGE	CODE	PROGRAM	AGE	CODE	PROGRAM	AGE	CODE	PROGRAM	AGE	CODE
<b>AM CAMPS</b> 9 a.m.-12 p.m.	Hip Hop Field Games Recycled Arts	5-7 5-7 8-12	41568 41572 41543	Recycled Arts Field Games Hip Hop	5-7 5-7 8-12	41546 41574 41570	All Sports B4K: Mine & Craft Nature Crafting	5-7 5-7 8-12	41588 41712 41584	Nature Crafting STEM w/LEGO All Sports	5-7 5-7 8-12	41586 41732 41590	B4K: Amus. Park Parkour Camp Theater Camp	5-7 8-13 8-12	41715 41785 41592	Theater Camp B4K: Jurassic Comic Book Camp	5-7 5-7 8-12	41594 41721 41676	Jedi LEGO Field Games Survivor Week	5-7 5-7 8-12	41735 41576 41596	Survivor Week Field Games Parkour Camp	5-7 5-7 8-13	41598 41578 41788	Minecraft LEGO Field Games Recycled Arts	5-7 5-7 8-12	41738 41580 41554	Recycled Arts Field Games Explore w/LEGOs	5-7 5-7 8-12	41566 41582 41741
12-1 p.m.	Lunch Hour	5-12	41600	Lunch Hour	5-12	41601	Lunch Hour	5-12	41602	Lunch Hour	5-12	41603	Lunch Hour	5-12	41604	Lunch Hour	5-12	41605	Lunch Hour	5-12	41606	Lunch Hour	5-12	41607	Lunch Hour	5-12	41608	Lunch Hour	5-12	41609
<b>PM CAMPS</b> 1-4 p.m.	Recycled Arts Hip Hop Field Games	5-7 8-12 8-12	41544 41569 41573	Hip Hop Field Games Recycled Arts	5-7 8-12 8-12	41571 41575 41547	Nature Crafting All Sports Jump Rope Camp	5-7 8-12 7-14	41585 41589 41717	All Sports Parkour Camp Nature Crafting	5-7 8-13 8-12	41591 41664 41587	Theater Camp B4K: Mine & Craft Bash Em' LEGO	5-7 8-12 8-12	41593 41716 41684	B4K: Mine & Craft Eco LEGOs Theater Camp	5-7 8-12 8-12	41722 41734 41595	Survivor Week Parkour Camp Field Games	5-7 8-13 8-12	41597 41665 41577	B4K: Amus. Park Field Games Survivor Week	5-7 8-12 8-12	41726 41579 41599	Recycled Arts Minecraft LEGO Field Games	5-7 8-12 8-12	41555 41739 41581	STEM w/LEGOs Field Games Recycled Arts	5-7 8-12 8-12	41687 41583 41567

## MONTLAKE COMMUNITY CENTER

	W1 6/21-6/25			W2 6/28-7/2			W3* 7/6-7/9			W4 7/12-7/16			W5 7/19-7/23			W6 7/26-7/30			W7 8/2-8/6			W8 8/9-8/13			W9 8/16-8/20			W10 8/23-8/27		
	PROGRAM	AGE	CODE	PROGRAM	AGE	CODE	PROGRAM	AGE	CODE	PROGRAM	AGE	CODE	PROGRAM	AGE	CODE	PROGRAM	AGE	CODE	PROGRAM	AGE	CODE	PROGRAM	AGE	CODE	PROGRAM	AGE	CODE	PROGRAM	AGE	CODE
<b>AM CAMPS</b> 9 a.m.-12 p.m.	All Sports Minecraft LEGOs Nature Crafting	5-7 5-7 8-12	41409 41731 41400	Nature Crafting B4K: Mine & Craft All Sports	5-7 5-7 8-12	41402 41695 41411	B4K: Amus. Park Field Games Theater Camp	5-7 5-7 8-12	41711 41423 41417	Theater Camp Field Games Mys. & Frights	5-7 5-7 8-12	41420 41426 41674	B4K: Jurassic Field Games Survivor Week	5-7 5-7 8-12	41714 41428 41433	Survivor Week Field Games Parkour Camp	5-7 5-7 8-13	41436 41431 41786	Hip Hop Parkour Camp Recycled Arts	5-7 8-13 8-12	41444 41787 41439	Recycled Arts B4K: Mine & Craft Hip Hop	5-7 5-7 8-12	41442 41725 41447	All Sports B4K: Amus. Park Nature Crafting	5-7 5-7 8-12	41413 41727 41404	Nature Crafting B4K: Galaxy All Sports	5-7 5-7 8-12	41407 41729 41415
12-1 p.m.	Lunch Hour	5-12	41449	Lunch Hour	5-12	41451	Lunch Hour	5-12	41453	Lunch Hour	5-12	41454	Lunch Hour	5-12	41455	Lunch Hour	5-12	41456	Lunch Hour	5-12	41458	Lunch Hour	5-12	41459	Lunch Hour	5-12	41460	Lunch Hour	5-12	41461
<b>PM CAMPS</b> 1-4 p.m.	Nature Crafting All Sports Comic Book Camp	5-7 8-12 8-12	41401 41410 41672	All Sports B4K: Galaxy Nature Crafting	5-7 8-12 8-12	41412 41696 41403	Theater Camp B4K: Jurassic Field Games	5-7 8-12 8-12	41419 41698 41425	STEM w/LEGO Field Games Theater Camp	5-7 8-12 8-12	41683 41427 41422	Survivor Week Jump Rope Camp Field Games	5-7 7-14 8-12	41435 41719 41430	Animal LEGO Field Games Survivor Week	5-7 8-12 8-12	41733 41432 41437	Recycled Arts Hip Hop Bash Em' LEGO	5-7 8-12 8-12	41440 41445 41685	Hip Hop Parkour Camp Recycled Arts	5-7 8-13 8-12	41784 41671 41443	Nature Crafting Outdoor Dance All Sports	5-7 6-8 8-12	41405 41680 41414	All Sports Outdoor Dance Nature Crafting	5-7 6-8 8-12	41416 41681 41408

# CAMP DESCRIPTIONS

CAMPS AT THESE SITES: **HP** High Point CC **J** Jefferson CC **LH** Loyal Heights CC **M** Montlake CC

## LEGO ENGINEERING AND STEM

### A Galaxy Far Away (B4K: Galaxy) **HP** **J** **M**

#### Brickz 4 Kidz

Experience a stellar journey to a galaxy far away with LEGO bricks. Build a rocket to blast through the atmosphere, or a world where rebels start epic battles. We will build motorized models representing spacecrafts and characters from popular space movies while we learn about space along the way.

**Cost:** \$192/week  
**Jefferson CC:** \$209/week (longer classes)

### Mining and Crafting (B4K: Mine & Craft) **HP** **J** **LH** **M**

#### Brickz 4 Kidz

Experience the world of Minecraft with LEGO bricks. Students will face new challenges each day, building models and crafting key elements from Minecraft. Kids will start by crafting their shelters and some of the mobs, critters, and tools using LEGO bricks.

**Cost:** \$192/week **Week of 7/4:** \$157/week  
**Jefferson CC:** \$209/week (longer classes)

### Adventures in STEM w/ LEGO® Materials **HP** **J** **LH**

#### Play-Well

Your child will build engineer-designed projects such as Tunnel Boring Machines, Stilt Houses and Teacup Rides as they design and build as never before, exploring their craziest ideas in a supportive environment.

**Cost:** \$230/week  
**Jefferson CC:** \$247/week (longer classes)

### Bash Em' Bots w/ LEGO® Materials **HP** **LH** **M**

#### Play-Well

Let the battle begin! In this challenge-based camp, students will traverse difficult obstacles, battle against fellow bots, and take on Play-Well instructor's colossal creations in the Battle Arena. Participants will apply real-world engineering and physics concepts to help bash and crash their way to victory.

**Cost:** \$230/week

### Jedi Engineering w/ LEGO® Materials **LH** **M**

#### Play-Well

The Force Awakens in this introductory engineering course for young Jedi! Trainees will explore engineering principles by designing and building projects using LEGO® materials such as X-Wings, R2 Units, Energy Catapults, and Settlements from a galaxy far, far away.

**Cost:** \$230/week  
**Jefferson CC:** \$247/week (longer classes)

### STEM Explorations w/LEGO® Materials **LH**

#### Play-Well

Apply real-world concepts in physics, engineering, and architecture through engineer-designed projects such as elaborate Houseboats, heavy duty Forklifts, and Big Ben Clocktowers! Your child will design and build as never before in a supportive environment.

**Cost:** \$230/week

### Amusement Parks (B4K: Amus. Park) **HP** **J** **LH** **M**

#### Brickz 4 Kidz

Get your ticket to ride at BEAM's very own Amusement Park! We will build a new ride each day and make things spin, roll, and rock with motorized models. Then campers take what they learned and create their own designs.

**Cost:** \$192/week **Week of 7/4:** \$157/week  
**Jefferson CC:** \$209/week (longer classes)

### Jurassic Brick Land (B4K: Jurassic) **J** **LH** **M**

#### Brickz 4 Kidz

Put on your hiking boots and camouflage...you're about to enter Jurassic Brick Land! Campers will build a world that comes to life with gentle Brontosaurus, a terrifying T-Rex, and more using our specialized kits. We'll learn about Jurassic era dinosaurs and other prehistoric animals that roamed the earth.

**Cost:** \$192/week **Week of 7/4:** \$157/week  
**Jefferson CC:** \$209/week (longer classes)

### Animal Architects w/ LEGO® Materials **M**

#### Play-Well

Let your imagination run wild as we design and build leaping dolphins, buzzing beehives, and towering giraffes. Play, create, and learn in a world inspired by the animal kingdom.

**Cost:** \$230/week

### Eco Engineering w/ LEGO® Materials **LH**

#### Play-Well

Celebrate nature, think sustainably, and understand the human world in a LEGO® camp focused on using earth's resources responsibly. Campers will design a recycling plant, harness wind and solar energy, build a wildlife bridge across the freeway, and more.

**Cost:** \$230/week

### Minecraft Engineering w/ LEGO® Materials **LH** **M**

#### Play-Well

Bring Minecraft to life using tens of thousands of LEGO® parts! Campers will build engineer-designed Minecraft themed projects with the guidance of an experienced Play-Well instructor! Students will have a blast, even without prior experience with Minecraft or LEGO® materials.

**Cost:** \$230/week

### Transportation Engineering using LEGO® Materials **HP**

#### Play-Well

Break the sound barrier on a supersonic jet, deliver cargo by train, and explore a swamp in an airboat. Your child will build and create different modes of transportation out of LEGO® pieces, while learning about the engineering concepts that make vehicles and vessels work.

**Cost:** \$230/week

## SPORTS & FITNESS

### All Sports **HP** **J** **LH** **M**

Kids can let their energy fly while playing all sorts of sports. Campers will explore skills to find a sport they love and build core skills essential to many athletes.

**Cost:** \$170/week **Week of 7/4:** \$136/week

### Jump Rope Camp **HP** **J** **LH** **M**

#### Ropeworks

Don't skip out on this fun jump rope camp, where all experience levels are welcome! Through jump-rope games, exercises, and activities with friends, your child will improve coordination and learn single rope tricks, partner routines, and double dutch.

**Cost:** \$261/week **Week of 7/4:** \$209/week  
**Jefferson CC:** \$304/week

## CREATIVE ARTS, CRAFTS, & DANCE

### Comic Book Camp **HP** **J** **LH** **M**

#### Pacifica Writers

Bring action into any story! Students will focus on the basic elements of writing and storytelling and put their skills into practice by creating their own comic book.

**Cost:** \$235/week  
**Jefferson CC:** \$249/week (longer classes)

### Hamilton with Stone Soup Theater **J**

Join us for a week working on excerpts from Hamilton, the fabulously popular musical about Alexander Hamilton. You'll sing, dance, rap, act, and learn a little bit about American history in the process. By Friday you'll be performing like a pro!

**Cost:** \$171/week

### Nature Crafting **HP** **J** **LH** **M**

Pair up nature, crafts, and kids and what do you get? Art your child will be proud to display and fun times shared with friends. Don't miss this creative camp to get kids out of the house and creating in nature.

**Cost:** \$170/week **Week of 7/4:** \$136/week

### Recycled Art **HP** **J** **LH** **M**

Recycling has never been so fun! Your child will learn to turn clean recyclables into beautiful works of art. We will repurpose unwanted materials into useful items in this DIY, environmentally friendly, crafting class.

**Cost:** \$170/week **Week of 7/4:** \$136/week

### Theatre Camp **HP** **J** **LH** **M**

Whether your child loves to be on stage performing, or behind the scenes designing costumes and building sets, your child will develop their self-expression and confidence with drama!

**Cost:** \$170/week **Week of 7/4:** \$136/week

### Field Games **LH** **M**

Your child will enjoy their favorite outdoor games with friends. From kickball to Capture the Flag and Ultimate Frisbee, it's non-stop fun here.

**Cost:** \$170/week **Week of 7/4:** \$136/week

### Parkour Camp **HP** **J** **LH** **M**

#### Parkour Visions

Why walk when you can parkour from Point A to B? Campers will practice their jumps, balance skills, acrobatics, and more. We will put these skills into action during instruction, games, and supervised free play.

**Cost:** \$348/week **Week of 7/4:** \$251/week  
**Jefferson CC:** \$365/week

### Mystery & Frights Camp (Mys. & Frights) **HP** **M**

#### Pacifica Writers

Do you have a young detective or thrill seeker in your household? In this brand-new camp, students will learn many techniques to create suspenseful writing. They will write terrifying tales and baffling mysteries to share around the campfire.

**Cost:** \$235/week  
**Jefferson CC:** \$249 (longer classes)

### Hip Hop Camp **HP** **J** **LH** **M**

Your energetic and passionate dancer will enjoy learning the expressive world of Hip Hop dance. Campers will be introduced to multiple styles of Hip Hop as they learn the foundations of b-boying/b-girling including toprock, footwork, freezes, and power moves.

**Cost:** \$170/week **Week of 7/4:** \$136/week

### Outdoor Dance Camp **HP** **M**

#### Moving Minds

These unique camps highlight the wonder of dancing in nature. Each day will include dancing outside, stories, crafts, nature studies, and creating choreography for the end-of-week performance. Children should bring water, a healthy lunch, and weather-appropriate clothing. We'll be outside rain or shine!

**Cost:** \$365/week

## NATURE & OUTDOORS

### Survivor Week **HP** **J** **LH** **M**

It's time to get outside! Your child will focus on the beauty of the great outdoors. We'll learn how to be safe and thrive in the wilderness through activities like scavenger hunts and safety skits!

**Cost:** \$170/week **Week of 7/4:** \$136/week